



GEIGER Worm gear 421F...

Product Datasheet



GEIGER
ANTRIEBSTECHNIK

Contents

| | |
|--------------------------------------|---|
| Worm gear 5,33:1 with end stop | 2 |
| Worm gear 8:1 with end stop | 3 |
| Worm gear 5,33:1 | 4 |
| Worm gear 8:11 | 4 |



Worm gear 421F... – variable worm gear in a stable design

Variable worm gear for use in roller shutters, screens or small awning systems respectively valances.

The stable design in 3 housing shapes can be ordered with or without end stop.
Different colours as well as versions with extension, mounted universal joint, plug-in crank system, zinc or plastic eyelet or 8 mm square adapter are available on request.

421F5.. | Worm gear 5,33:1 with end stop

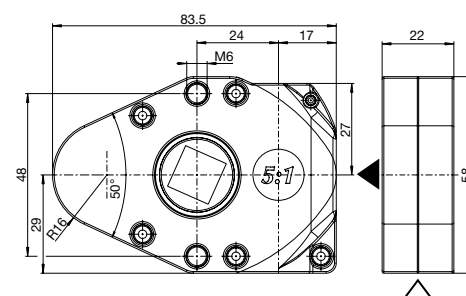
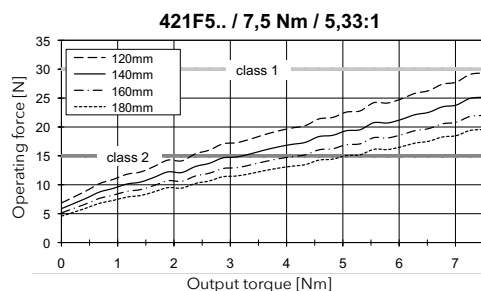
| | |
|--------------------|--------|
| Max. output torque | 7,5 Nm |
| Reduction ratio | 5,33:1 |
| Efficiency | 0,40 |

Features

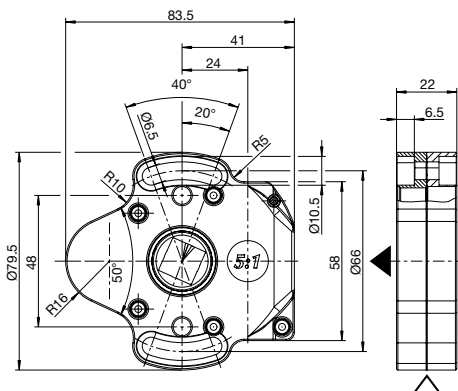
- With end stop
- Diecast zinc housing, worm wheel out of steel
- Continuous interior profile at drive and output
- Available in three different housing designs

Note

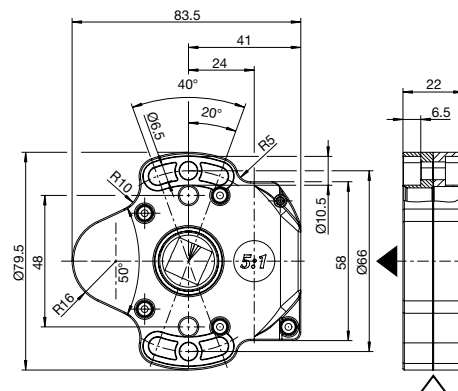
- Coloured versions on request
- Designs with extensions, mounted universal joints, zinc or plastic eyelets or 8 mm square adaptor on request



Housing design A (TK 48 mm)



Housing design B (TK 66 mm)



Housing design C (TK 66 mm with fixation)

Options for worm gear 5,33:1 with end stop

| | |
|----------------|--|
| Drive | 6 mm and 7 mm, continuous interior profile |
| Output | 13 mm and 16 mm, continuous interior profile |
| Pitch circle Ø | 48 mm, 66 mm and 66 mm with fixation |
| Colours | Bright finish or powder-coated |

Housing design A

| Part Nr. | Drive △ | Output ▲ |
|----------|---------|----------|
| 421F556 | 6 mm | 16 mm |
| 421F557 | 7 mm | 16 mm |
| 421F558 | 7 mm | 13 mm |
| 421F559 | 6 mm | 13 mm |

Housing design B

| Part Nr. | Drive △ | Output ▲ |
|----------|---------|----------|
| 421F552 | 6 mm | 16 mm |
| 421F553 | 7 mm | 16 mm |
| 421F554 | 7 mm | 13 mm |

Housing design C

| Part Nr. | Drive △ | Output ▲ |
|----------|---------|----------|
| 421F561 | 6 mm | 16 mm |
| 421F562 | 7 mm | 16 mm |
| 421F563 | 7 mm | 13 mm |
| 421F564 | 6 mm | 13 mm |

421F8.. | Worm gear 8:1 with end stop

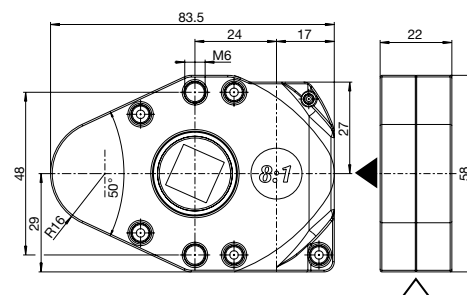
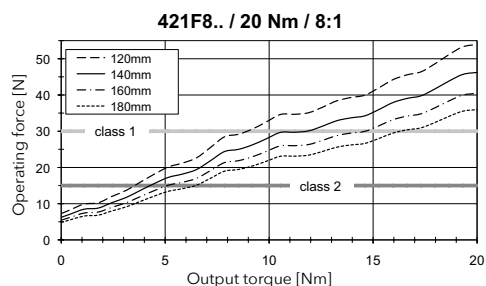
| | |
|--------------------|--------------|
| Max. output torque | 20 Nm |
| Reduction ratio | 8:1 |
| Efficiency | 0,39 |

Features

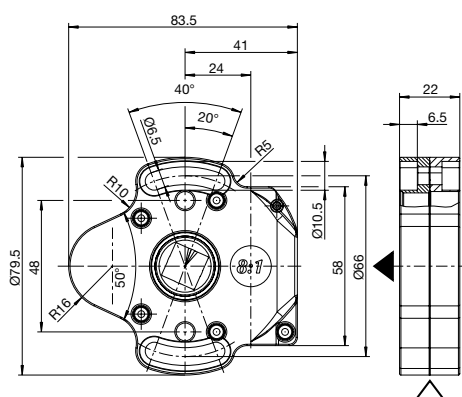
- With end stop
- Diecast zinc housing, worm wheel out of steel
- Continuous interior profile at drive and output
- Available in three different housing designs
- Tested according to DIN EN 14201

Note

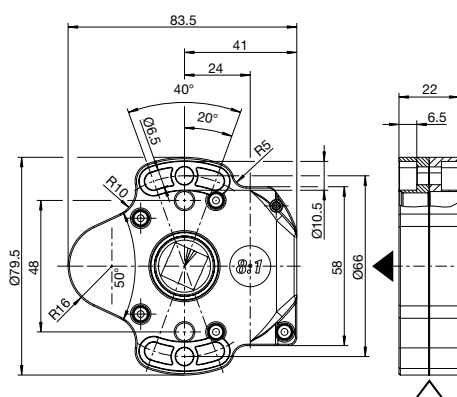
- Coloured versions on request
- Designs with extensions, mounted universal joints, zinc or plastic eyelets or 8 mm square adaptor on request



Housing design A (TK 48 mm)



Housing design B (TK 66 mm)



Housing design C (TK 66 mm with fixation)

Options for worm gear 8:1 with end stop

| | |
|----------------|---|
| Drive | ⊙ 6 mm and ⊙ 7 mm, continuous interior profile |
| Output | ⊙ or ⊙ 13 mm and ⊙ 16 mm, continuous interior profile |
| Pitch circle Ø | 48 mm, 66 mm and 66 mm with fixation |
| Colours | Bright finish or powder-coated |

Housing design A

| Part Nr. | Drive △ | Output ▲ |
|----------|---------|----------|
| 421F855 | ⊙ 6 mm | ⊙ 16 mm |
| 421F856 | ⊙ 7 mm | ⊙ 16 mm |
| 421F857 | ⊙ 7 mm | ⊙ 13 mm |
| 421F861 | ⊙ 6 mm | ⊙ 13 mm |

Housing design B

| Part Nr. | Drive △ | Output ▲ |
|----------|---------|----------|
| 421F851 | ⊙ 6 mm | ⊙ 16 mm |
| 421F853 | ⊙ 7 mm | ⊙ 13 mm |

Housing design C

| Part Nr. | Drive △ | Output ▲ |
|----------|---------|----------|
| 421F862 | ⊙ 6 mm | ⊙ 16 mm |
| 421F863 | ⊙ 7 mm | ⊙ 16 mm |
| 421F864 | ⊙ 7 mm | ⊙ 13 mm |
| 421F865 | ⊙ 6 mm | ⊙ 13 mm |

421F5.. | Worm gear 5,33:1

| | |
|--------------------|---------------|
| Max. output torque | 7,5 Nm |
| Reduction ratio | 5,33:1 |
| Efficiency | 0,40 |

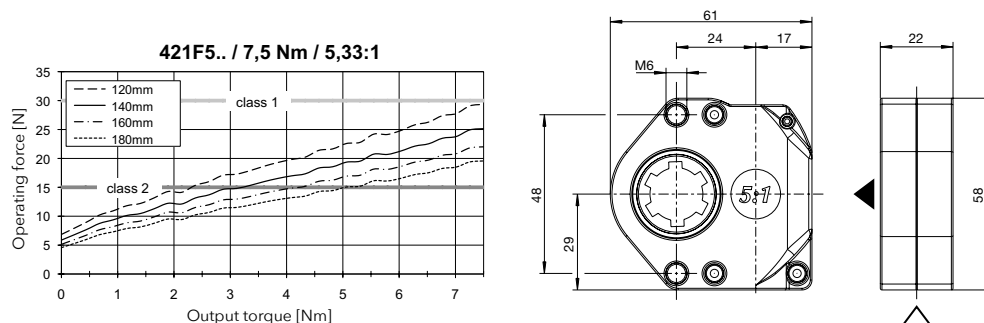


Features

- Without end stop
- Housing and worm wheel made out of diecast zinc
- Continuous interior profile at drive and output

Note

- Coloured versions on request
- Designs with extensions, mounted universal joints, zinc or plastic eyelets or 8 mm square adaptor on request



| Part Nr. | Drive \triangle | Output \blacktriangle |
|----------|-------------------|-------------------------|
| 421F504 | \bigcirc 6 mm | \bigcirc 13 mm |
| 421F542 | \bigcirc 7 mm | \bigcirc 13 mm |
| 421F544 | \bigcirc 6 mm | \star 16 mm |
| 421F546 | \bigcirc 7 mm | \star 16 mm |

421F8.. | Worm gear 8:1

| | |
|--------------------|--------------|
| Max. output torque | 20 Nm |
| Reduction ratio | 8:1 |
| Efficiency | 0,39 |

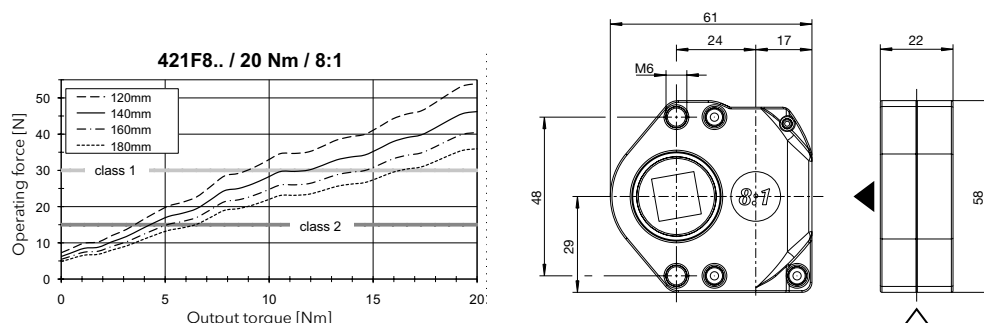


Features

- Without end stop
- Diecast zinc housing
- Worm and worm wheel out of steel
- Continuous interior profile at drive and output
- Tested according to DIN EN 14201

Note

- Coloured versions on request
- Designs with extensions, mounted universal joints, zinc or plastic eyelets or 8 mm square adaptor on request



| Part Nr. | Drive \triangle | Output \blacktriangle |
|----------|-------------------|-------------------------|
| 421F892 | \bigcirc 7 mm | \bigcirc 10 mm |
| 421F804 | \bigcirc 6 mm | \bigcirc 13 mm |
| 421F842 | \bigcirc 7 mm | \bigcirc 13 mm |