



## Product data sheet

# Freewheel for awnings 418F36. – Operating safety for awnings without end stop

## ■ Problem and solution

### Incorrect operation excluded

#### PROBLEM:

The user opens the awning completely. When retracting the awning he turns the crank in the wrong direction so that the cloth is wound up "the wrong way".  
Result: the cassette doesn't close completely any more. The user often becomes aware of the situation after rain and UV radiation have damaged the cloth. This of course leads to customer complaints.

#### SOLUTION:

The **GEIGER freewheel system 418F36.** prevents a „wrong“ winding of the cloth.

## ■ Design and Function

### Application range

The option **GEIGER freewheel system 418F36.** can be selected each time when a gear with end stop is not operational due to ...

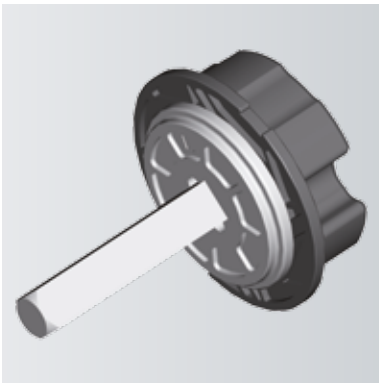
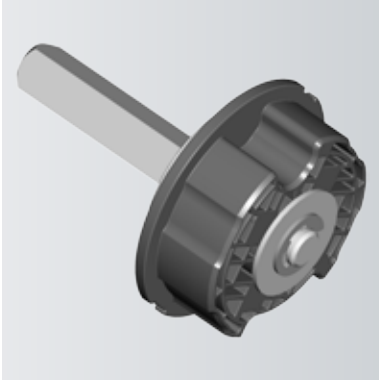
- space reasons
- cost considerations
- or for reasons of product differentiation.

### Function of the freewheel system 418F36.

- This freewheel system is placed in the square output of the gear.
- The functionality remains the same when extending the awning.
- The functionality remains the same when (properly) retracting the awning.
- If the user turns the crank handle the wrong way, the freewheel system triggers automatically and prevents faulty operation. The system also includes an acoustic signal for additional warning.

### Contents

Problem and solution .....	1
Design and Function .....	1
Advantages .....	2
Note .....	2
Dimensions and technical data .....	2



## Advantages

- ▶ Freewheel adjustment during installation or later is not necessary. It can be installed in the retracted awning.
- ▶ Cost-effective alternative to a gear with integrated end stop.
- ▶ Modularity: the awnings are available with/without freewheel systems.
- ▶ A tube drive is here unnecessary. The freewheel overlap is 7 mm in the axial direction.

## Note

Depending on the installation situation, please select the **right-hand** or **left-hand** version of the freewheel.

## Dimensions and technical data

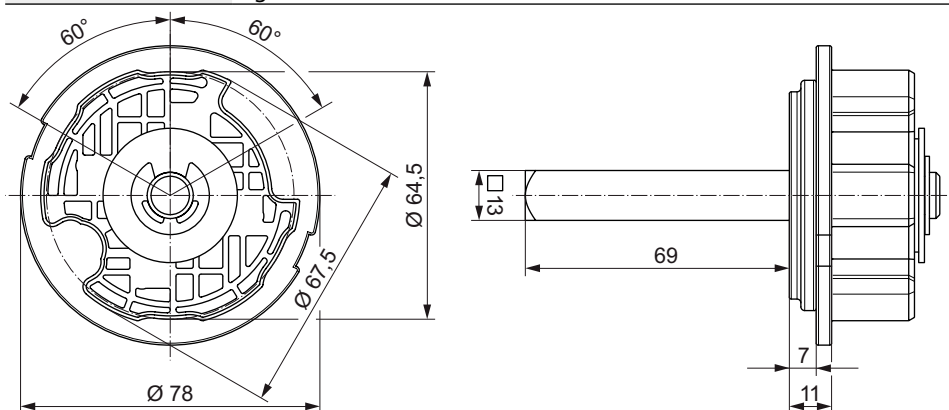
### Preconditions for using the series 418F36.

- Gear with output profile 13 mm square, in which the freewheel 418F36. can be mounted
- Max. torque of the awning system: 22 Nm
- Durability: 3000 cycles
- Average release torque: 0.4 Nm

### Following versions are available:

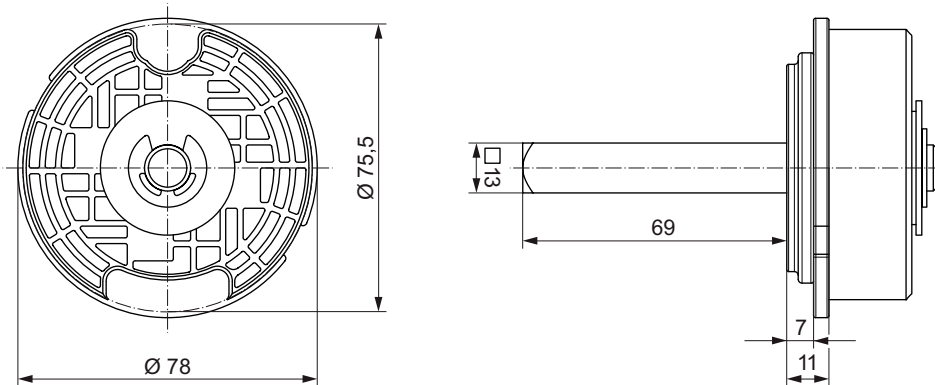
#### Freewheel 418F362/418F363 for round tube with groove profile 70 mm

Freewheel for round tube with groove profile 70 mm	
418F362	left version
418F363	right version



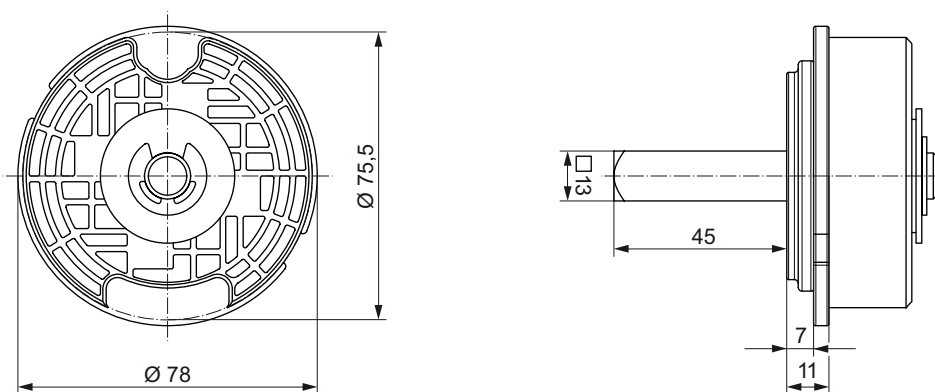
### Freewheel 418F364/418F365 for round tube with groove profile 78 mm (69 mm square)

Freewheel for round tube with groove profile 78 mm	
418F364	left version
418F365	right version



### Freewheel 418F369/418F370 for round tube with groove profile 78 mm (45 mm square)

Freewheel for round tube with groove profile 78 mm	
418F369	left version
418F370	right version





The name GEIGER Antriebstechnik is synonymous worldwide for drive solutions in the sun protection area.

Today we are with more than 300 employees one of the leading manufacturers of mechanical and electrical drives for Venetian blinds, awnings and rolling shutters.

GEIGER is a well-known, mid-sized company which offers worldwide drive components for the sun protection systems.