



## Product Datasheet

# Spindle stops for Venetian blinds

In order to limit the moving range of the Venetian blind to the top and / or bottom the installation of a spindle stop is quite useful.

The principle: the traveling nut moves along the threaded spindle within an assigned range of movement from one end stop to the other. This function is simple but effective: the risk of damage caused by improper use or improper winding of the blind can be easily avoided.

The spindle stops are available with three internal profiles.

With their high-quality materials, the GEIGER spindle stops for Venetian blinds are durable and wear resistant and offer maximum operating convenience.

## Content

712F...   Spindle stops made of plastic .....	2
712F...   Spindle stops made of aluminium .....	3
712F6..   Spindle stops .....	4

### 712F... | Spindle stops made of plastic

Range of application:  
**Venetian blinds with 50 mm head rail**

### 712F... | Spindle stops made of aluminium

Range of application:  
**Venetian blinds with 30 mm - 55 mm head rail**

### 712F6.. | Spindle stops made of aluminium and plastic

Range of application:  
**Venetian blinds with 25 mm head rail**



## 712F... | Spindle stops made of plastic

Range of application: **Venetian blinds with 50 mm head rail (e.g.: 57 x 51 mm, 58 x 56 mm)**

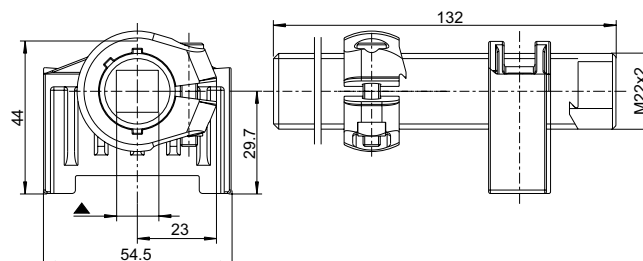


### Features

- Driven by an orientation shaft, see profiles on table below (further profiles on request)
- Limits the upward and downward motion of the blinds, thus preventing damage in the event of incorrect operation
- Adjustable end stops
- Maximum 42 turns until lock operates
- Spindle, stop and stop ring made of high-strength plastic
- Rust-proof

### Notes

- Only suitable for manual operation. Use with electric drives only after consultation.



Part Nr.	Interior profile ▲	Driving nut
712F200	○ 12 mm	54,5 x 29,7 mm
712F201	● 14 mm	54,5 x 29,7 mm
712F203	○ 8 mm	54,5 x 29,7 mm
712F210	○ 7 mm	54,5 x 29,7 mm

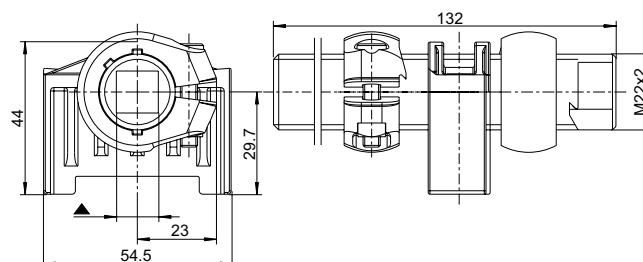


### Features

- Driven by an orientation shaft, see profiles on table below (further profiles on request)
- Limits the upward and downward motion of the blinds, thus preventing damage in the event of incorrect operation
- Two adjustable end stops
- Maximum 33 turns until lock operates
- Spindle, stop and stop ring made of high-strength plastic
- Rust-proof

### Notes

- Only suitable for manual operation. Use with electric drives only after consultation.



Part Nr.	Interior profile ▲	Driving nut
712F220	○ 12 mm	54,5 x 29,7 mm
712F221	● 14 mm	54,5 x 29,7 mm
712F222	○ 8 mm	54,5 x 29,7 mm
712F223	○ 7 mm	54,5 x 29,7 mm

## 712F... | Spindle stops made of aluminium

Range of application: **Venetian blinds with 40 mm/50 mm head rails (e.g.: 57 x 51 mm, 58 x 56 mm)**

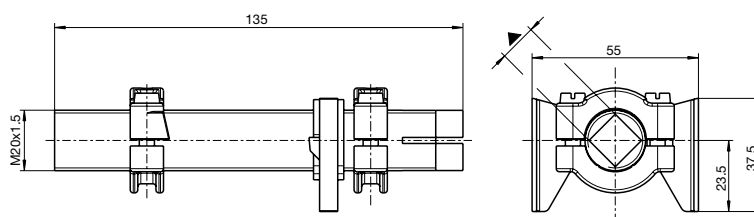


### Features

- Limits the upward and downward motion of the blinds, thus preventing damage in the event of incorrect operation
- Driven by an orientation shaft, see profiles on table below (further profiles on request)
- Two adjustable end stops
- Maximum 50 turns until lock operates
- Spindle made of aluminium, stops and nut made out of diecast zinc
- Rust-proof

### Notes

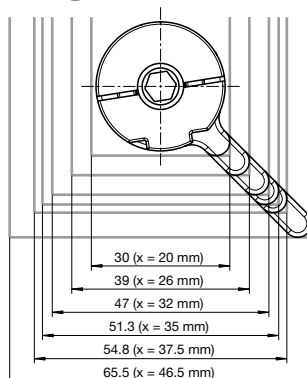
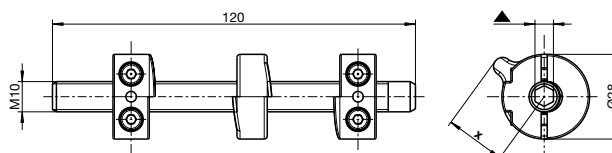
- Only suitable for manual operation. Use with electric drives only after consultation.



Part Nr.	Interior profile ▲	Driving nut
712F125	○ 12 mm	55 x 37,5 mm
712F128	○ 7 mm	55 x 37,5 mm
712F145	○ 14 mm	55 x 37,5 mm

## 712F... | Spindle stops made of aluminium

Range of application: **Venetian blinds with 30 mm - 55 mm head rails**



Part Nr.	Interior profile ▲	Driving nut [x]
712F520	○ 5 mm	tab holder 20 mm
712F521	○ 6 mm	tab holder 20 mm
712F628	○ 6 mm	tab holder 26 mm
712F632	○ 6 mm	tab holder 32 mm
712F635	○ 6 mm	tab holder 35 mm
712F735	○ 7 mm	tab holder 35 mm
712F637	○ 6 mm	tab holder 37,5 mm

Tab Holder 46,5 mm on request.

# 712F6.. | Spindle stops

Range of application: **Venetian blinds with 25 mm head rail (e.g.: 25 x 25 mm)**

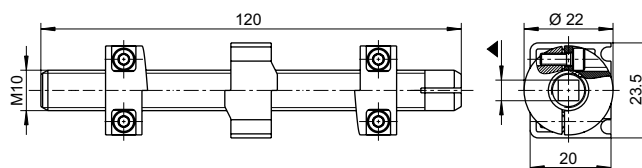


## Features

- Limits the upward and downward motion of the blinds, thus preventing damage in the event of incorrect operation
- Driven by an orientation shaft, see profiles on table below (further profiles on request)
- Two adjustable end stops
- Maximum drive torque 2,5 Nm with a tightening moment of the stop screws of 1,5 Nm
- Maximum 50 turns until lock operates
- Aluminium spindle, die-cast zinc end stops and plastic nut
- Rust-proof

## Notes

- Only suitable for manual operation. Use with electric drives only after consultation.



Part Nr.	Interior profile ▲	Driving nut
712F651	○ 5 mm	23,5 X 20 mm
712F652	○ 5 mm	23,5 X 20 mm
712F653	○ 6 mm	23,5 X 20 mm



The name GEIGER Antriebstechnik is synonymous worldwide for drive solutions in the sun protection area.

Today we are with about 320 employees one of the leading manufacturers of mechanical and electrical drives for Venetian blinds, awnings and rolling shutters.

GEIGER is a well-known, mid-sized company which offers worldwide drive components for the sun protection systems.