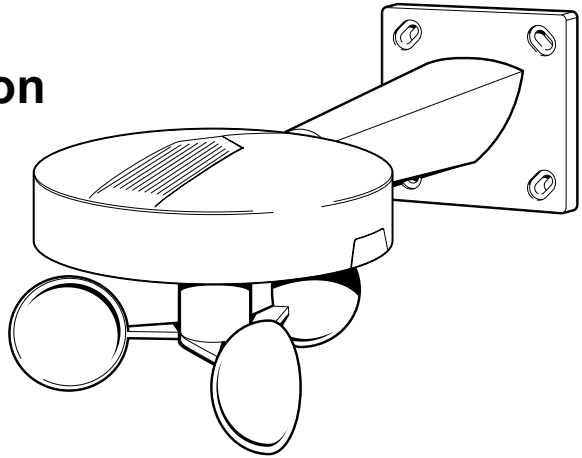


Wetterstation
Weather station
Station météo

GEIGER
ANTRIEBSTECHNIK

**Weather station
AIR GF3000**



EN

**Original assembly and
operating instructions**

EN

1. General information

Dear customer,

The purchase of a GEIGER radio-controlled product was a good decision. You have acquired a high-quality product from the house of GEIGER.

Thank you very much for your decision and the confidence placed in us.

2. Guarantee

In the case of incorrect installation contrary to the operating instructions and/or constructional modification, the legal and contractual guarantee for property damage and product liability lapses.

3. Specific safety information

Please observe following instructions in order to avoid damage to this product:

- ▶ **Avoid impacts.**
- ▶ **Do not drop the device.**
- ▶ **Do not immerse in water or any liquid.**
- ▶ **Never use cleaning agents or abrasive solvents. Clean the surface of the weather station with a soft dry cloth.**

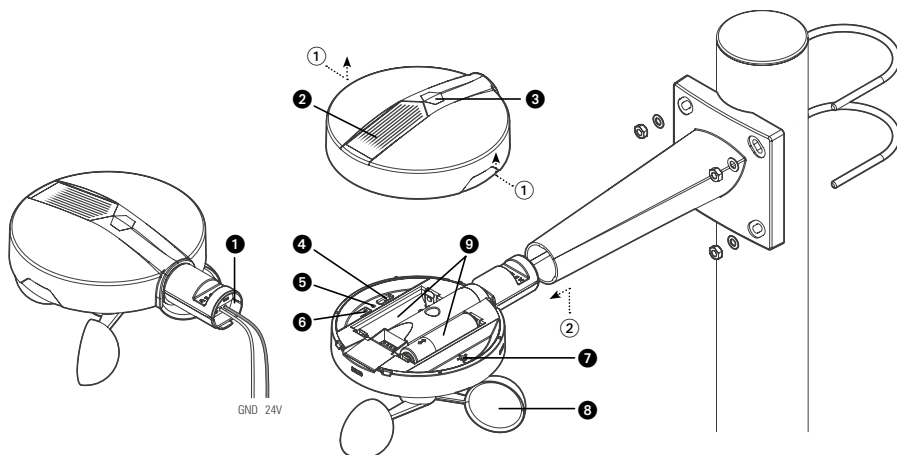
4. Scope of delivery

- Weather station
- 2 x 1,5 V AA batteries
- Fixing accessories for wall mounting (4 x screws and dowels)
- Fixing accessories for mast mounting (2 x brackets, 4 x nuts with washers)
- Quick start guide

5. Weather station AIR / Functionality

①	Optional power supply (24 V DC)	⑥	Learn button (only LX mode)
②	Rain sensor	⑦	Wind warning potentiometer
③	Brightness sensor	⑧	Wind mill
④	Switch (GG/LX mode)	⑨	Battery compartment (1,5V AA batteries)
⑤	Status LED (only LX mode)		

EN



6. Insert/remove/replace battery

Remove the lid from the top of the weather station ① and insert the supplied or new batteries in the battery compartments ②. The status LED lights up 2 x after proper insertion. Close the lid and press lightly until it clicks into place.



If the weather station transmits no signal for 2 days (weak batteries, defect), the sun protection moves to its protection position. The sun protection can be manually operated but is driven back to the protection position after reaching the end position. The motor confirms with two short travel movements (2 x „click“) before start.



For operation with GEIGER transmitters the switch must be set on position „GG“.

7. Adjust the wind sensitivity



Please note that wind can vary locally. Air turbulence can occur especially on house walls and lead to incorrect measuring values.



In any case, observe the regulations or recommendations of the manufacturer of the sun protection systems.

The wind speed potentiometer ③ is used to set the wind sensitivity from 20 to 65 km/h. Turn the adjusting screw all the way to the left (counter clockwise) to be on value 0. The function can now be tested by turning the wind wheel.

Potentiometer position	Threshold value
1	20 km/h
2	25 km/h
3	30 km/h
4	40 km/h
5	65 km/h

8. Mounting



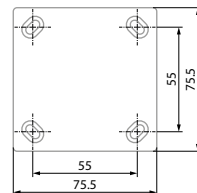
Mount the weather station near the sunshade to be protected.

Wall mounting

The strength of the masonry or of the substructure should be checked before mounting.

Mast mounting

Place the two brackets around the mast (max. 50 mm diameter) and tighten with washers and nuts. Make sure that the nuts are not over-tightened (risk of breakage).



Bore pattern for wall mounting

EN

9. Sensor groups

The weather station has 3 AIR sensor groups to which each drive can be assigned. Any motor in an active group can react to any number of weather stations.

Group sun

After reaching the set value and if the sun automatic function is switched on, the assigned drives (for example awnings or Venetian blinds) move to their shading position (when set on intermediary position) or move to the lower end position when:

- the brightness exceeds 28.000 lux for 5 minutes or
- has increased by more than 10.000 lux in the last 5 minutes.

Assigned drives move to their protected position on reaching the set value (with sun automatic function switched on) when:

- the brightness falls below 5.000 lux for 20 minutes or
- the brightness has fallen below 28.000 Lux and decreased by more than 10.000 lux in the last 5 minutes.

Group rain

Assigned drives (for example awnings) move to their protection position when rain is detected. As long as rain is detected, the weather station transmits a signal at intervals of 5 minutes. After the last signal, operating the sun protection is not possible during the next 15 minutes.

Group wind

Assigned drives (for example awnings or Venetian blinds) move to their protected position when the set value is reached. If the value falls below, operating the sun protection is not possible during the next 15 minutes.

10. AIR motor assignment to sensor groups

To assign a drive to one of the three groups (sun / wind / rain), you need a remote AIR handheld transmitter, a LC handheld transmitter or a LC wall transmitter.

Briefly interrupt supply voltage of the motor. The motor makes two short movements (2 x „click“). The assignment to the groups is only possible within 30 minutes.

Should you need another 30 minutes, briefly interrupt again the supply voltage.

Press the LEFT and RIGHT buttons on the transmitter for approx. 10 seconds until a LED flashes.

Press the STOP button for about 1.5 seconds. The motor which is nearest to the transmitter or which has the best reception confirms the learning mode for end positions (2 x „click“). Should the improper motor be selected, move closer to the motor you need.

Press the RIGHT or LEFT key to select the desired group on the transmitter. The transmitter displays the selected group.

Group	Transmitter LC AIR	Remote AIR
Sun	Sun LED flashes	1 x long flash
Wind	Sun LED lights + digit 2 flashes	2 x long flash
Rain	Sun LED lights + digit 1 flashes	3 x long flash

After selecting the desired group, use the UP and STOP buttons to assign the motor to the selected group. If the motor has just been added to this group, it confirms with 1 x „click“.

The motor can be removed from the selected group by pressing the DOWN and STOP buttons. If it was the only group it was assigned to, it confirms with 6 x „click“. If it is still assigned to another group, it confirms with 4 x „click“.

When a motor is selected, all group members can be edited.

To end the assignment, press the LEFT and RIGHT buttons on the transmitter for about 4 seconds until a LED flashes. The transmitter also automatically switches to normal mode after 5 minutes.

To select another motor, press the STOP button for about 1.5 seconds. The motor which is nearest to the transmitter or which has the best reception confirms the learning mode for end positions (2 x „click“). Should the improper motor be selected, move closer to the motor you need.

11. Switch the automatic sun function on and off

In normal operation, it is possible to switch on/off the automatic sun function for the entire group. Use the LEFT and RIGHT buttons to select the automatic sun function.

Function	Transmitter LC AIR	Remote AIR
Automatic sun	Sun LED lights	1 x long flash

The automatic sun function is switched off with the DOWN button (2 x „click“).

With the UP button, the automatic sun function is switched on (1 x „click“).

If the order is accepted by a motor of the group, the LED flashes green. If the motors do not accept the order, the LED flashes red.



If the sun protection is manually operated, the automatic sun function is switched off and must be switched on again manually.

12. Functions

Sensor group	Power supply		Operating mode	
	Battery	24 V (power supply)	GG	LX
Sun sensor	X	X	X	X
Wind sensor	X	X	X ¹⁾	X ¹⁾
Rain sensor	X (not heated)	X (heated)	X	X
Temperature	X	X	-	X

¹⁾In battery operation, the value set on the potentiometer always counts (also in LX mode).

13. Technical specifications

Power supply	2 x 1,5 V AA batteries or external power supply via 10 ... 30 V DC SELV
Power consumption	approx. 14 µW / 39 mW (battery operation) max. 1.1 W (24 V DC/rain sensor heating always active)
Frequency	868 MHz (SRD band Europe) 915 MHz (ISM band region 2)
Outdoor range	up to 30 m in open space
Protection class	IP44
Temperature range	-30°C ... 85°C
Wind sensor	mechanical response threshold 8 km/h
Wind measuring range	20 ... 65 km/h in GEIGER mode (adjustable) 9 ... 145 km/h in LOXONE mode
Temperature sensor	-40 ... 125°C (only Loxone mode)
Brightness detection range	0 ... 188.000 Lux
Rain sensor	with condensation protection and heating (24 V DC)
Dimensions	262 x 120 x 90 mm
Weight	234g incl. batteries
Fixation (incl. accessories)	Wall mounting Mast mounting (max. Ø 50 mm)
Cleaning	Wipe off with a dry cloth
Maintenance	Maintenance-free
Connections (24 V DC)	
Wire diameter	0.25 ... 0.8 mm ²
Exposed wire length	5 mm stripped
Push-in technology	Connect: insert wire ends Remove: twist and pull at the same time

EN

14. Declaration of conformity

The weather station complies with the relevant technical regulations enacted by the European Union. It bears the CE mark and is authorised for use in all EU member states and in Switzerland without any need of prior registration.

Current declarations of conformity are available under www.geiger.de

15. Disposal

Recycling of packaging materials

Packaging materials are raw materials and, therefore, recyclable. In the interest of environmental protection, please contact your local government's recycling or solid waste management department to learn more about the services it provides.

Waste disposal of electric and electronic equipment

According to the EC directives, all waste electrical and electronic equipment should be disposed of and collected separately.

16. Appendix

Light situations

Environmental conditions	Light values
Bright summer day	70.000 Lux
Cloudy summer day	20.000 Lux
Shadow in the summer	10.000 Lux
Overcast winter day	3.000 Lux
Room lighting	800 Lux
Street lighting	10 lux
Night sky	1 Lux

Wind speed in different units

Description	m/s	km/h	Beaufort	knots
Windless	< 0,3	< 1,1	0	< 1
Nearly windless	0,3 - 1,5	1,1 - 5,4	1	1 - 3
Very weak wind	1,6 - 3,3	5,5 - 11,9	2	4 - 6
Low Wind	3,4 - 5,4	12,0 - 19,4	3	7 - 10
Moderate wind	5,5 - 7,9	19,5 - 28,4	4	11 - 16
Fresh wind	8,0 - 10,7	28,5 - 38,5	5	17 - 21
Very fresh wind	10,8 - 13,8	38,6 - 49,7	6	22 - 27
Strong wind	13,9 - 17,1	49,8 - 61,5	7	28 - 33
Very strong wind	17,2 - 20,7	61,6 - 74,5	8	34 - 40
Storm	20,8 - 24,4	74,6 - 87,8	9	41 - 47
Heavy storm	24,5 - 28,4	87,9 - 102,2	10	48 - 55
Hurricane-like storm	28,5 - 32,6	102,3 - 117,3	11	56 - 63
Hurricane	> 32,6	> 117,3	12	> 63

EN

EN

For technical questions, please call our service team at: **+49 (0) 7142 938 333**.
They will be happy to assist you.

GEIGER
ANTRIEBSTECHNIK

Gerhard Geiger GmbH & Co. KG
Schleifmühle 6 | D-74321 Bietigheim-Bissingen
T +49 (0) 7142 9380 | F +49 (0) 7142 938 230
info@geiger.de | www.geiger.de

