



Product Data Sheet

GEIGER-SOLIDline Easy – Easy installation and high level of comfort for rolling shutters

Introduction

Commissioning of sun protection drives is now considerably simplified with the new Easy electronic limit stop from GEIGER.

The well-known and reliable Easy technology has been further simplified. No need to have a special setting cable, no need to follow a specific sequence and 2 setting options are available: just Easy!

Problem and solution

Assembly efficiency

PROBLEM:

Because the end positions have to be adjusted again and again until they fit, the installation of rolling shutters often takes too much time.

SOLUTION:

The **GEIGER-SOLIDline Easy** ensures an extremely fast and efficient programming: manual or automatic positioning (Plug & Play). This saves assembly time and money.

Lifetime of the rolling shutter system

PROBLEM:

Rolling shutter systems are exposed to extreme conditions such as sun, wind and temperature. Moreover many shutter drives set the curtain under permanent tensile stress: this can over time damage the whole system.

SOLUTION:

The **GEIGER-SOLIDline Easy** has an intelligent curtain protection function. It protects the curtain from unnecessary tension. The rolling shutter remains in shape much longer – technically and optically.

Everything from one source

PROBLEM:

Motors and accessories are used from different manufacturers. In some cases this might lead to assembly problems, operational malfunction or even damage.

SOLUTION:

We provide you with a wide range of fixation solutions for the **GEIGER-SOLIDline Easy** and on request with the appropriate GEIGER anti-lift device.

Contents

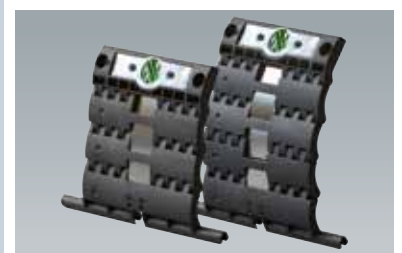
Introduction	1
Problem and solution	1
Design and features.....	2
GEIGER Soft-functions	2
Functions	2
Setting the end positions:.....	3
Motor series SOLIDline	3
Technical data.....	4

SOLIDline Easy

Application fields

- Rolling shutters with and without stoppers or anti-lift device
- Open style folding arm awnings
- Facade awnings
- Screens

GEIGER anti-lift device



Available with 2 or 3 elements for mini and maxi profiles

Made by GEIGER

GEIGER relies on Germany as production location: the **GEIGER Easy**, like all GEIGER motors, are developed and produced in Germany. This situation allows an optimal combination of R & D, manufacturing processes and quality management.

Our clients benefit from

- low noise motors
- low energy consumption, a big plus factor today
- low heating of the engine and therefore an unusual long running time



Design and features

The **SOLIDline Easy** meets several market requirements in a quite unusual way:

- ▶ **Installation with manual positioning or**
 - ▶ **Installation with automatic position detection (Plug & Play)**
 - ▶ **Protection of the rolling shutter system with Soft-functions**
- ... a well-conceived system: **GEIGER-SOLIDline Easy**

GEIGER Soft-functions

Soft motor intelligence

The **GEIGER-SOLIDline Easy** has a very sensitive intelligence which provides the typical GEIGER „soft shutdown“ in the end positions, in order to achieve optimal protection of the curtain.

Soft position

Torque shutdowns stress the rolling shutter system more than position shutdowns. Therefore, the **GEIGER-SOLIDline Easy** uses torque shutdowns only when absolute necessary. Torque shutdowns in the upper end position are only made for the programming run and the reference runs after 50 cycles. After installation, there are no further torque shutdowns in the lower end position.

When the end stops are reached, the curtain is no longer submitted to tensile loading – in 98% of the cases. Damages to the system are thus avoided. Moreover, a freezing over night of an angle end bar in the upper end position can also be prevented.

Synchronous position in the upper end position

It is a common problem: in case of motors that do not determine the upper end position with torque shutdown in each cycle, the end bars of the different rolling shutters are often positioned at different levels.

The Geiger motor intelligence ensures that when rolling shutters of different sizes are mounted next to the other, the bottom laths are positioned on the same level. This is a really nice visual upgrade for the house facade for example on balconies with windows and patio doors.

Functions

Programming the end positions

The programming of the end positions is accomplished through a very sensitive torque shutdown or through fixed positioning.

Checking the end positions

The correction of the end positions is also accomplished through a sensitive torque shutdown with reference runs after the first 5 and 20 cycles and then after 50 cycles.

Between these reference runs the curtain stops a few millimetres before the shutter box is reached in the upper end position so that there is no permanent tensile load on the curtain.

Antifreeze protection

The **GEIGER-SOLIDline Easy** is equipped with an antifreeze protection in UP direction. The situation «curtain frozen to the window sill overnight» is recognized by the system and the curtain will not be damaged.

The GEIGER-Soft position also prevents the contact between bottom bar and box so that a freezing problem in the DOWN direction is excluded.

Obstacle detection

The **GEIGER-SOLIDline Easy** has a sensitive obstacle detection in UP direction and a blocking detection in DOWN direction.

An obstacle detection in DOWN direction is available upon request and in coordination with our customers. This provides an extra safety protection especially in relation with balcony and patio doors.

Setting the end positions:

Note: when setting the end positions with a torque shutdown, stoppers (upper end position) and anti-lift device (lower end position) are necessary.

The motor is preset at the factory with + / - 2,5 rotations. You can begin with the upper or lower end position.

Connect drive connecting cable with a setting cable

- ➊ Press UP and DOWN keys at the same time (motor jerks 1 x)
- ➋ Move curtain to the upper end position (alternative to the upper stop. Step ➌ is omitted)
- ➌ Press UP and DOWN keys at the same time (motor jerks 2 x)
- ➍ Move curtain to the lower end position (alternative to the lower stop. Step ➎ is omitted)
- ➎ Press UP and DOWN keys at the same time (motor jerks 3 x)

Ready! the setting process is completed.

Motor series SOLIDline

The **GEIGER SOLIDline** motors have been developed for the specific needs of the sun protection industry and the craft trade. The motor is characterized by:

- ▶ **Low noise emissions and extremely smooth operation**
- ▶ **Low power consumption and reduced operating costs**
- ▶ **Long service life and high reliability**

SOLIDline motor heads

All **SOLIDline** motors are available with four different motor heads:

- The extremely narrow **KS motor head** made of plastic is best suited for all GEIGER fixation systems in order to provide quick and easy assembly/disassembly with low space requirement.
- The extremely thin **COM motor head** offers the possibility to optimize the fabric width for screens and facade awnings. The sun protection system can be designed independently from the selected drive. Light slots should be minimized or avoided altogether – as in ZIP screens.
- The **SOC motor head** is optimally designed for installation with star shaped fixation systems. The motor head is universally applicable in the rolling shutter area also together with traditional fastening systems.
- With the **SIL motor head** GEIGER has found a new solution in order to prevent noise emissions. Due to special bearings with rubber inserts noise and vibration are not transmitted in the system and the masonry.



SOLIDline-KS



SOLIDline-COM

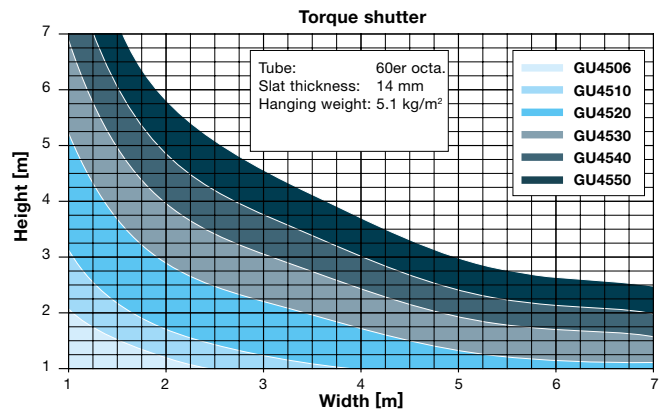
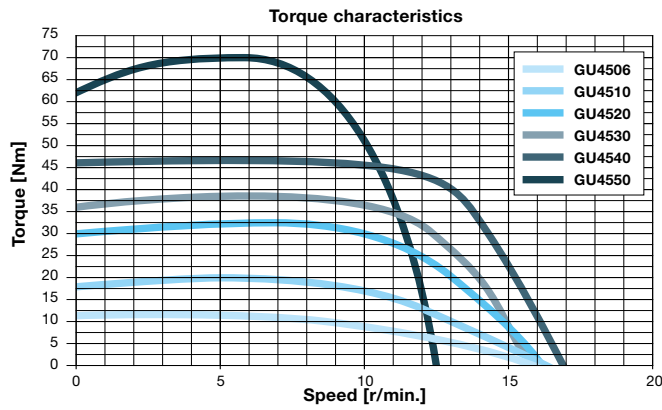


SOLIDline-SOC



SOLIDline-SIL

Technical data



Technical data of tubular motor SOLIDline-KS (GU45..)

	GU4506	GU4510	GU4520	GU4530	GU4540	GU4550 ³⁾
Voltage	230V~/50Hz					
Current	0,36 A	0,47 A	0,63 A	0,8 A	1,0 A	1,0 A
Cos Phi (cosφ)	>0,95					
Inrush current (factor)	x 1,2					
Power	83 W	105 W	140 W	180 W	220 W	220 W
Torque	6 Nm	10 Nm	20 Nm	30 Nm	40 Nm	50 Nm
Speed	16 rpm	16 rpm	16 rpm	16 rpm	16 rpm	12 rpm
Protection class	IP 44					
Total length¹⁾	506,5 mm	516,5 mm	546,5 mm	566,5 mm	586,5 mm	586,5 mm
Operating mode	S2 4 min	S2 4 min	S2 5 min	S2 4 min	S2 4 min	S2 4 min
Sound pressure level²⁾	39 dB(A)	39 dB(A)	41 dB(A)	41 dB(A)	43 dB(A)	-
Diameter	45 mm					
Weight	approx 1,85 kg	approx 1,90 kg	approx 2,20 kg	approx 2,40 kg	approx 2,70 kg	approx 2,70 kg
Storage temperature/Humidity	T = -15°C .. +70°C / dry and non-condensing place					

¹⁾ SOLIDline-COM: + 3,5 mm / SOLIDline-SOC: + 3 mm / SOLIDline-SIL: ± 0 mm (without trunnion)

²⁾ The average sound pressure level data are intended for guidance only. The values were determined by GEIGER at a distance of 1 m, with a hanging motor at idle speed and averaged over 10 seconds. There is no reference to any specific test standard.

³⁾ GU4550 is only available with motor head KS and SOC and CE-certification.

Subject to technical modifications. Please find information to the ambient temperature range of our GEIGER motors under www.geiger.de



The name GEIGER Antriebstechnik is synonymous worldwide for drive solutions in the sun protection area.

Today we are with more than 300 employees one of the leading manufacturers of mechanical and electrical drives for Venetian blinds, awnings and rolling shutters.

GEIGER is a well-known, mid-sized company which offers worldwide drive components for the sun protection systems.