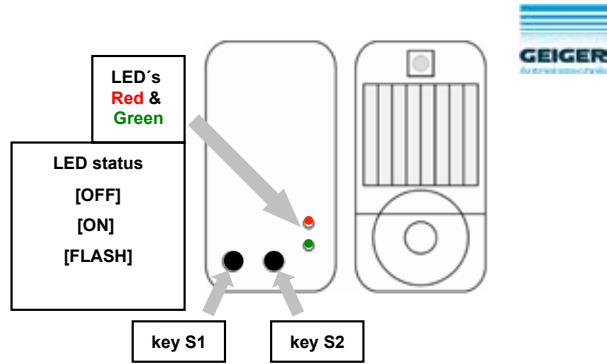
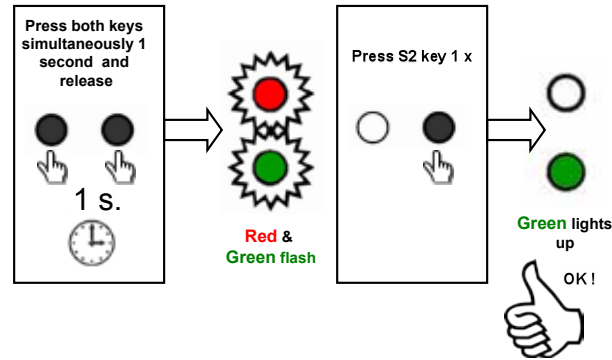


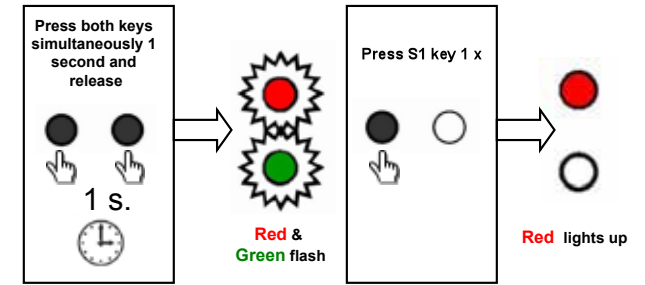
1: GF0022 Operating keys & LED display:



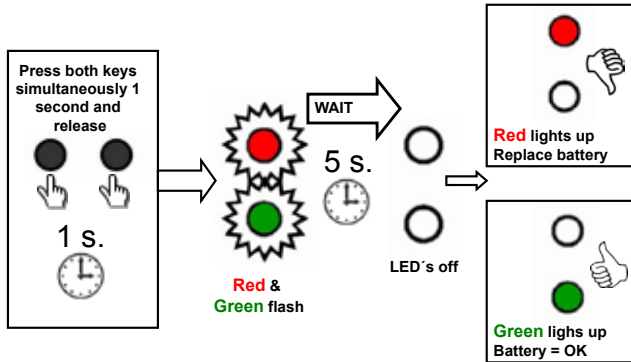
2: IMPORTANT ! Switch on automatic sensor:



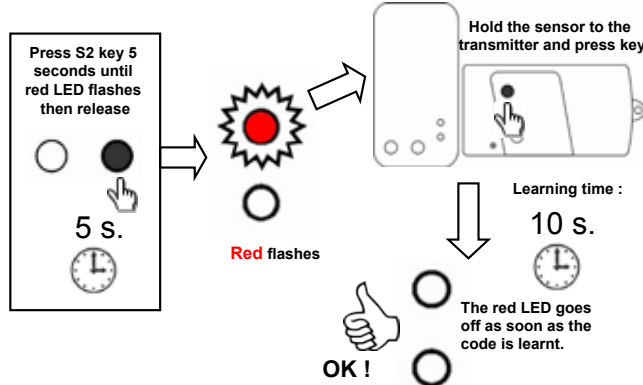
3: Switch off automatic sensor:



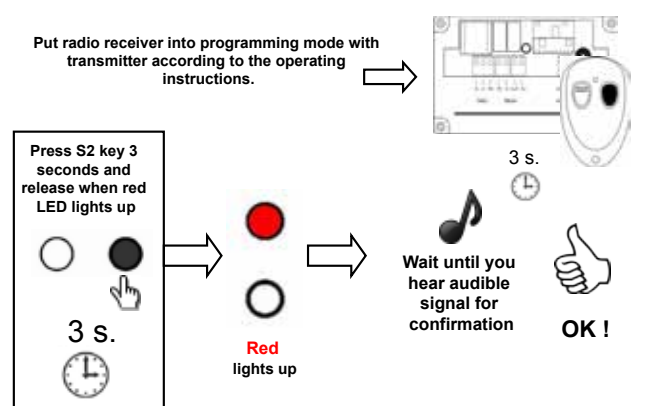
4: Check the battery condition:



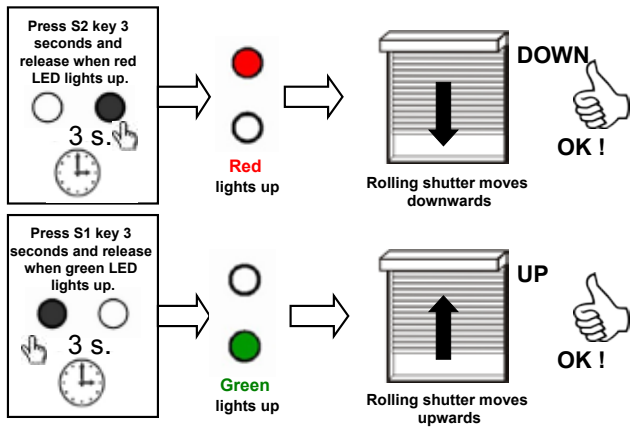
5: Learning of the radio code:



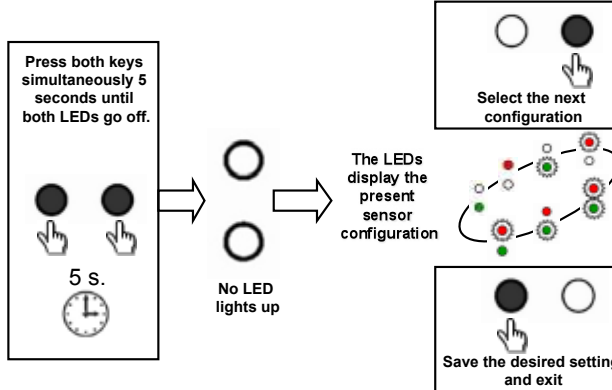
6: Learning of the sensor code on the receiver:



7: Test UP and DOWN functions:

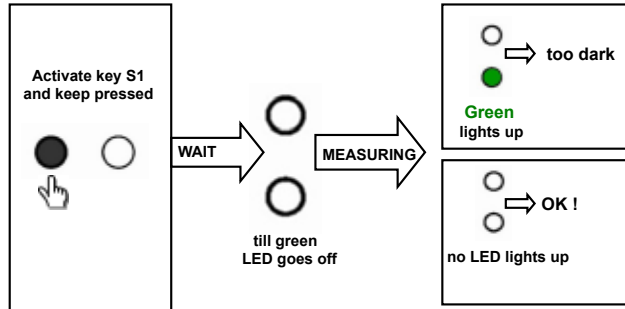


8: Configuration of sensor functions:

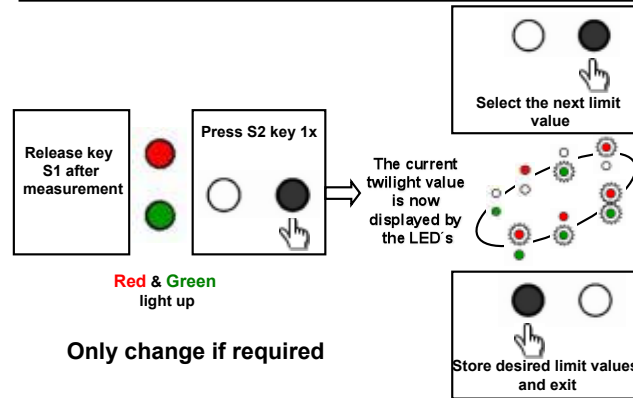


	Only close rolling shutter in the evening		Twilight → after 10 minutes DOWN
	Only move rolling shutter by sunshine		Sun too bright → after 3 minutes DOWN
			Sun too dark → after 10 minutes UP
	Move rolling shutter by sunshine and close in the evening		Sun too bright → after 3 minutes DOWN
			Sun too dark → after 10 minutes UP
			Twilight → after 10 minutes DOWN
	Move rolling shutter by sunshine with sun position readjustment (factory setting)		Sun too bright → after 3 minutes DOWN
			Sun too dark → after 10 minutes UP
			Sun rises → after 10 min. Readjust UP
			Sun goes down → after 60 min. Readjust DOWN
	Move rolling shutter by sunshine with sun position readjustment and close in the evening		Sun too bright → after 3 minutes DOWN
			Sun too dark → after 10 minutes UP
			Sun rises → after 10 min. Readjust UP
			Sun goes down → after 60 min. Readjust DOWN
			Twilight → after 10 minutes DOWN
	Outdoor sensor, only move rolling shutter by sunshine		Sun too bright → after 3 minutes DOWN
			Sun too dark → after 10 minutes UP
	Outdoor sensor, move rolling shutter by sunshine and close in the evening		Sun too bright → after 3 minutes DOWN
			Sun too dark → after 10 minutes UP
			Twilight → after 15 minutes DOWN
			Dawn → after 20 minutes UP

10: Checking of the luminous intensity in the twilight:

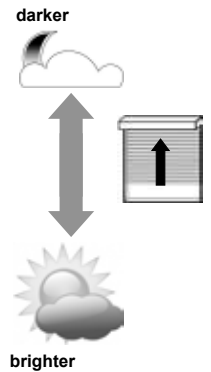


11: Setting of the twilight limiting value:

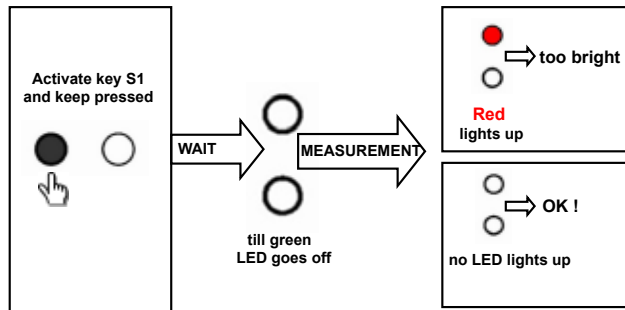


7 adjustable twilight limiting values:

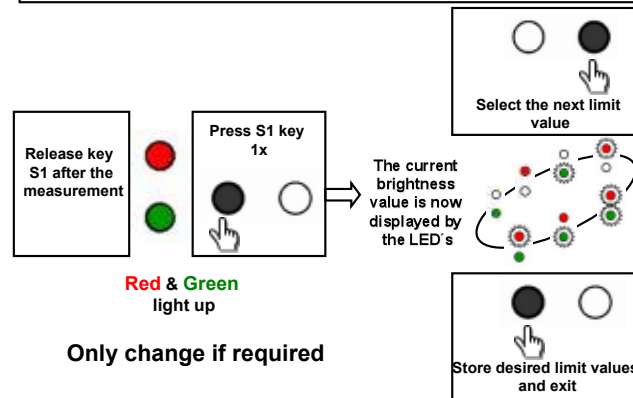
<input type="radio"/>	15 Lx – Street lighting in the dark
<input type="radio"/>	25 Lx - Darkness
<input checked="" type="radio"/>	40 Lx – Factory setting twilight
<input type="radio"/>	60 Lx – Staircase lighting
<input type="radio"/>	100 Lx – Beginning of twilight
<input type="radio"/>	150 Lx – Dark winter day
<input type="radio"/>	230 Lx – Living room lighting



13. Checking of the luminous intensity in the daylight:

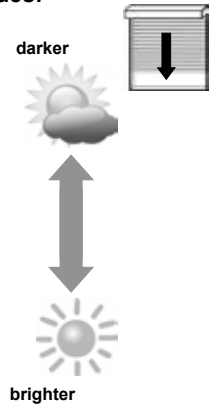


14: Setting of the brightness limiting value:

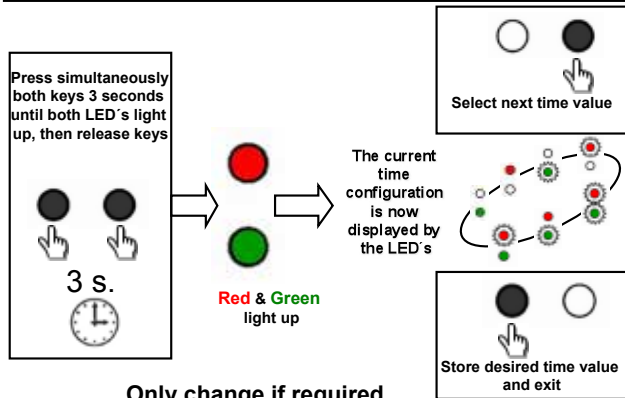


7 adjustable brightness limiting values:

<input type="radio"/>	6.000 Lx – Winter day, rainy day
<input type="radio"/>	9.000 Lx – Shade in summer
<input type="radio"/>	13.000 Lx – Overcast sunny day
<input checked="" type="radio"/>	19.000 Lx – Factory setting brightness
<input type="radio"/>	28.000 Lx – Partly cloudy
<input type="radio"/>	41.000 Lx – Sunny day
<input type="radio"/>	60.000 Lx – Bright summer day

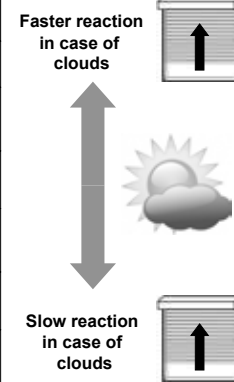


16: Configure cloud suppression time:



7 adjustable time values:

<input type="radio"/>	10 minutes (factory setting)
<input type="radio"/>	15 minutes
<input type="radio"/>	20 minutes
<input type="radio"/>	30 minutes
<input type="radio"/>	40 minutes
<input type="radio"/>	50 minutes
<input type="radio"/>	60 minutes



18: Set back to factory settings:

